



STATIC HOT XL

TSR

SELF-PRIMING PUMPS



PER MAGGIORI INFORMAZIONI



BOX DIMENSION (cm)	1200 x 800 x 1950
QUANTITY FOR PALLET	1
PALLET DIMENSION (cm)	1200 x 800 x 1950
N. MACHINES CONTANER 20'	11*
N. MACHINES CONTANER 40' (40' HQ)	25*

* for shipments in containers, possibility of doubling the quantities

GENERAL FEATURES

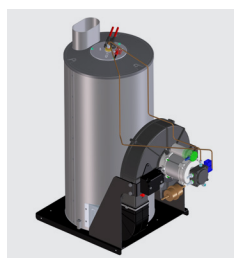
- 4 poles electrical motor (1400 RPM) with thermal protection and air cooling
- Integrated elastic joint, for best pump coupling (excluding single-phase models)
- Three full ceramic pistons, brass triplex ZW / FW2 Comet pumps head
- External by-pass vave
- Suction and delivery S. S. valves
- Low voltage and delayed Total Stop
- High pressure detergent suction (from external tank in Extra models) with solenoid valve
- Diesel tank 25 liters with level gauge and filter
- Vertical burner with high thermal efficiency steel coil
- Control panel with protection cover
- General stop (when the machine is not used for a long time)
- Anti-scale device with pump and tank (1 l)
- Micro-leaks detector
- Accessory holder
- Flow switch burner control and flame sensor
- Automatic hose reel with 20m high pressure hose (in Extra models)
- Low temperature thermoacoustic insulation protection/ heating
- Heating resistance for frost protection
- Internal water tank with float level

Electrical motor with elastic joint (only on 3-phases models)



ZW / FW2

Comet triplex pumps, ceramic pistons and brass head



Vertical burner with high thermal efficiency steel coil and run on Diesel fuel



Practical storage of the gun



Stainless steel version available on request

TECHNICAL FEATURES

CODE	MODELS	PUMP																			
			Ph	V	Hz	bar	MPa	bar	MPa	l/h	HP	kW	kW	°C	kg/h	kg	(L x W x H) cm				
36075-00040	STATIC HOT XL 3.12 12/110 M Classic	ZW	1	230	50	120	12	30÷100	3÷10	290÷720	3,0	2,2	2,9	85÷110	3,5	190	76 x 48 x 180				
36075-00039	STATIC HOT XL 3.12 12/110 M Extra	ZW	1	230	50	120	12	30÷100	3÷10	290÷720	3,0	2,2	2,9	85÷110	3,5	210	76 x 48 x 180				
36075-00038	STATIC HOT XL 8.15 15/200 T Classic	FW2	3	400	50	200	20	30÷190	3÷19	390÷900	7,5	5,5	6,0	85÷110	5,7	200	76 x 48 x 180				
36075-00035	STATIC HOT XL 8.15 15/200 T Extra	FW2	3	400	50	200	20	30÷190	3÷19	390÷900	7,5	5,5	6,0	85÷110	5,7	220	76 x 48 x 180				
36075-00042	STATIC HOT XL 10.21 21/200 T Classic	FW2	3	400	50	200	20	30÷190	3÷19	560÷1260	9,0	6,6	7,0	85÷110	6,4	210	76 x 48 x 180				
36075-00041	STATIC HOT XL 10.21 21/200 T Extra	FW2	3	400	50	200	20	30÷190	3÷19	560÷1260	9,0	6,6	7,0	85÷110	6,4	230	76 x 48 x 180				

STANDARD EQUIPMENT



GH 401 gun with Swivel (n.2 o-ring)

TECHNICAL FEATURES					COMPATIBLE MODELS					
l/min	IN	OUT	bar	CODE	36075-00040	36075-00039	36075-00038	36075-00035	36075-00042	36075-00041
40	G 3/8" M	M22x1,5F long	400	00080-01104						



Double barrel lance, without nozzles

TECHNICAL FEATURES				COMPATIBLE MODELS					
IN	OUT	mm	CODE	36075-00040	36075-00039	36075-00038	36075-00035	36075-00042	36075-00041
M22x1,5 M	2x1/4 NPT F	700	10002-03559						



Fan shape nozzle

TECHNICAL FEATURES				COMPATIBLE MODELS					
IN	∅		CODE	36075-00040	36075-00039	36075-00038	36075-00035	36075-00042	36075-00041
1/4" NPT M	05	25	00080-01376						
1/4" NPT M	045	25	00080-01374						
1/4" NPT M	07	25	00080-01382						



Detergent nozzle for double barrel lance

TECHNICAL FEATURES				COMPATIBLE MODELS					
IN	∅		CODE	36075-00040	36075-00039	36075-00038	36075-00035	36075-00042	36075-00041
1/4" NPT M	60	50	00080-01247						

STANDARD EQUIPMENT



Rubber delivery hose kit

TECHNICAL FEATURES				COMPATIBLE MODELS					
IN	OUT	m	CODE	36075-00040	36075-00039	36075-00038	36075-00035	36075-00042	36075-00041
M22x1,5 F - Ø14	G 3/8" F	10 - R1 5/16"	10002-03598						
G 3/8" F	G 3/8" F	20 - R1 5/16"	00014-00290						
M22x1,5 F - Ø14	G 3/8" F	10 - R2 5/16"	10002-03404						
G 3/8" F	G 3/8" F	20 - R2 5/16"	00014-00233						
M22x1,5 F - Ø14	G 3/8" F	10 - R2 3/8"	10002-03312						
G 3/8" F	G 3/8" F	20 - R2 3/8"	00014-00268						



Flame control kit

TECHNICAL FEATURES				COMPATIBLE MODELS					
CODE				36075-00040	36075-00039	36075-00038	36075-00035	36075-00042	36075-00041
10001-00953									

ACCESSORIES



GH 401 gun with fixed lance (1100mm), with nozzle holder, without nozzle, with Swivel

TECHNICAL FEATURES					COMPATIBLE MODELS					
l/min	IN	OUT	bar	CODE	36075-00040	36075-00039	36075-00038	36075-00035	36075-00042	36075-00041
40	G 3/8"M	G 1/4"F	400	00080-01016						



GH 401 gun with revolving lance (1100mm), with nozzle holder, without nozzle, with Swivel

TECHNICAL FEATURES					COMPATIBLE MODELS					
l/min	IN	OUT	bar	CODE	36075-00040	36075-00039	36075-00038	36075-00035	36075-00042	36075-00041
40	G 3/8"M	G 1/4"F	400	00080-01018						



Bent lance with adjustable jet

TECHNICAL FEATURES				COMPATIBLE MODELS					
IN	mm	Ø	CODE	36075-00040	36075-00039	36075-00038	36075-00035	36075-00042	36075-00041
M22x1,5 M	700	045	10002-03530						
M22x1,5 M	700	07	10002-03685						



Bent lance, with rotating nozzle

TECHNICAL FEATURES				COMPATIBLE MODELS					
IN	mm	Ø	CODE	36075-00040	36075-00039	36075-00038	36075-00035	36075-00042	36075-00041
M22x1,5 M	560	045	10002-03409						
M22x1,5 M	560	070	10002-03518						



Foam lance, with regulator

TECHNICAL FEATURES				COMPATIBLE MODELS					
IN	l/min	lt	CODE	36075-00040	36075-00039	36075-00038	36075-00035	36075-00042	36075-00041
M22x1,5 M	20	1	10002-03520						



Sand/Soda blasting lance kit

TECHNICAL FEATURES				COMPATIBLE MODELS					
IN	mm	Ø	CODE	36075-00040	36075-00039	36075-00038	36075-00035	36075-00042	36075-00041
M22x1,5 M	435 / 500	040	10002-03401						
M22x1,5 M	435 / 500	080	10002-03588						



Rotating brush

TECHNICAL FEATURES				COMPATIBLE MODELS					
IN	bar	l/min	CODE	36075-00040	36075-00039	36075-00038	36075-00035	36075-00042	36075-00041
M22x1,5 M	20	8-11	00080-00924						
M22x1,5 M	20	13-18	00080-00925						



Drain nozzle

TECHNICAL FEATURES				COMPATIBLE MODELS					
IN	m	l/min	CODE	36075-00040	36075-00039	36075-00038	36075-00035	36075-00042	36075-00041
M22x1,5 M	25	10 ÷ 15	00058-00632						
M22x1,5 M	25	16 ÷ 29	00058-00630						



Steam nozzle kit complete with lance

TECHNICAL FEATURES				COMPATIBLE MODELS					
IN	mm	Ø	CODE	36075-00040	36075-00039	36075-00038	36075-00035	36075-00042	36075-00041
M22x1,5 M	700	0,6	10002-03696						



Bent lance with detergent head, without nozzle

TECHNICAL FEATURES				COMPATIBLE MODELS - MODELLI COMPATIBILI					
IN	OUT	mm	CODE	36075-00040	36075-00039	36075-00038	36075-00035	36075-00042	36075-00041
M22x1,5 M	1/4" NPT F	760	10002-03590						



Spiral suction hose kit

TECHNICAL FEATURES				COMPATIBLE MODELS					
IN	OUT	m	CODE	36075-00040	36075-00039	36075-00038	36075-00035	36075-00042	36075-00041
Ø 18	Ø 23	8	10002-02545						



Rubber delivery hose extension kit

TECHNICAL FEATURES				COMPATIBLE MODELS					
IN	OUT	m	CODE	36075-00040	36075-00039	36075-00038	36075-00035	36075-00042	36075-00041
M22x1,5 F - Ø14	M22x1,5 M - Ø14	10 - R1 5/16"	10002-03403						
M22x1,5 F - Ø14	M22x1,5 M - Ø14	10 - R2 5/16"	10002-03596						
M22x1,5 M - Ø14	M22x1,5 F - Ø14	15 - R2 3/8"	10002-03566						
M22x1,5 M - Ø14	M22x1,5 F - Ø14	10 - R2 3/8"	10002-03564						
M22x1,5 M - Ø14	M22x1,5 F - Ø14	30 - R2 3/8"	10002-03778						



STATIC HOT XL

TSR

SELF-PRIMING PUMPS



PER MAGGIORI INFORMAZIONI



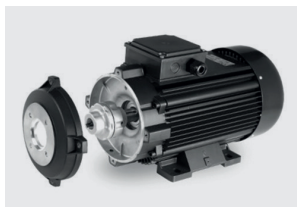
BOX DIMENSION (cm)	1200 x 800 x 1950
QUANTITY FOR PALLET	1
PALLET DIMENSION (cm)	1200 x 800 x 1950
N. MACHINES CONTANER 20'	11*
N. MACHINES CONTANER 40' (40' HQ)	25*

* for shipments in containers, possibility of doubling the quantities

GENERAL FEATURES

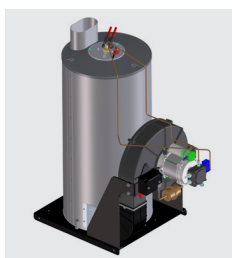
- 4 poles electrical motor (1400 RPM) with thermal protection and air cooling
- Integrated elastic joint, for best pump coupling (excluding single-phase models)
- Three full ceramic pistons, brass triplex ZW / FW2 Comet pumps head
- External by-pass vave
- Suction and delivery S. S. valves
- Low voltage and delayed Total Stop
- High pressure detergent suction (from external tank in Extra models) with solenoid valve
- Diesel tank 25 liters with level gauge and filter
- Vertical burner with high thermal efficiency steel coil
- Control panel with protection cover
- General stop (when the machine is not used for a long time)
- Anti-scale device with pump and tank (1 l)
- Micro-leaks detector
- Accessory holder
- Flow switch burner control and flame sensor
- Automatic hose reel with 20m high pressure hose (in Extra models)
- Low temperature thermoacoustic insulation protection/ heating
- Heating resistance for frost protection
- Internal water tank with float level

Electrical motor with elastic joint (only on 3-phases models)



ZW / FW2

Comet triplex pumps, ceramic pistons and brass head



Vertical burner with high thermal efficiency steel coil and run on Diesel fuel



Practical storage of the gun



Stainless steel version available on request

TECHNICAL FEATURES

CODE	MODELS	PUMP																			
			Ph	V	Hz	bar	MPa	bar	MPa	l/h	HP	kW	kW	°C	kg/h	kg	(L x W x H) cm				
36075-00040	STATIC HOT XL 3.12 12/110 M Classic	ZW	1	230	50	120	12	30÷100	3÷10	290÷720	3,0	2,2	2,9	85÷110	3,5	190	76 x 48 x 180				
36075-00039	STATIC HOT XL 3.12 12/110 M Extra	ZW	1	230	50	120	12	30÷100	3÷10	290÷720	3,0	2,2	2,9	85÷110	3,5	210	76 x 48 x 180				
36075-00038	STATIC HOT XL 8.15 15/200 T Classic	FW2	3	400	50	200	20	30÷190	3÷19	390÷900	7,5	5,5	6,0	85÷110	5,7	200	76 x 48 x 180				
36075-00035	STATIC HOT XL 8.15 15/200 T Extra	FW2	3	400	50	200	20	30÷190	3÷19	390÷900	7,5	5,5	6,0	85÷110	5,7	220	76 x 48 x 180				
36075-00042	STATIC HOT XL 10.21 21/200 T Classic	FW2	3	400	50	200	20	30÷190	3÷19	560÷1260	9,0	6,6	7,0	85÷110	6,4	210	76 x 48 x 180				
36075-00041	STATIC HOT XL 10.21 21/200 T Extra	FW2	3	400	50	200	20	30÷190	3÷19	560÷1260	9,0	6,6	7,0	85÷110	6,4	230	76 x 48 x 180				

STANDARD EQUIPMENT



GH 401 gun with Swivel (n.2 o-ring)

TECHNICAL FEATURES					COMPATIBLE MODELS					
l/min	IN	OUT	bar	CODE	36075-00040	36075-00039	36075-00038	36075-00035	36075-00042	36075-00041
40	G 3/8" M	M22x1,5F long	400	00080-01104						



Double barrel lance, without nozzles

TECHNICAL FEATURES				COMPATIBLE MODELS					
IN	OUT	mm	CODE	36075-00040	36075-00039	36075-00038	36075-00035	36075-00042	36075-00041
M22x1,5 M	2x1/4 NPT F	700	10002-03559						



Fan shape nozzle

TECHNICAL FEATURES				COMPATIBLE MODELS					
IN	∅		CODE	36075-00040	36075-00039	36075-00038	36075-00035	36075-00042	36075-00041
1/4" NPT M	05	25	00080-01376						
1/4" NPT M	045	25	00080-01374						
1/4" NPT M	07	25	00080-01382						



Detergent nozzle for double barrel lance

TECHNICAL FEATURES				COMPATIBLE MODELS					
IN	∅		CODE	36075-00040	36075-00039	36075-00038	36075-00035	36075-00042	36075-00041
1/4" NPT M	60	50	00080-01247						

STANDARD EQUIPMENT



Rubber delivery hose kit

TECHNICAL FEATURES				COMPATIBLE MODELS					
IN	OUT	m	CODE	36075-00040	36075-00039	36075-00038	36075-00035	36075-00042	36075-00041
M22x1,5 F - Ø14	G 3/8" F	10 - R1 5/16"	10002-03598						
G 3/8" F	G 3/8" F	20 - R1 5/16"	00014-00290						
M22x1,5 F - Ø14	G 3/8" F	10 - R2 5/16"	10002-03404						
G 3/8" F	G 3/8" F	20 - R2 5/16"	00014-00233						
M22x1,5 F - Ø14	G 3/8" F	10 - R2 3/8"	10002-03312						
G 3/8" F	G 3/8" F	20 - R2 3/8"	00014-00268						



Flame control kit

TECHNICAL FEATURES				COMPATIBLE MODELS					
CODE				36075-00040	36075-00039	36075-00038	36075-00035	36075-00042	36075-00041
10001-00953									

ACCESSORIES



GH 401 gun with fixed lance (1100mm), with nozzle holder, without nozzle, with Swivel

TECHNICAL FEATURES					COMPATIBLE MODELS					
l/min	IN	OUT	bar	CODE	36075-00040	36075-00039	36075-00038	36075-00035	36075-00042	36075-00041
40	G 3/8" M	G 1/4" F	400	00080-01016						



GH 401 gun with revolving lance (1100mm), with nozzle holder, without nozzle, with Swivel

TECHNICAL FEATURES					COMPATIBLE MODELS					
l/min	IN	OUT	bar	CODE	36075-00040	36075-00039	36075-00038	36075-00035	36075-00042	36075-00041
40	G 3/8" M	G 1/4" F	400	00080-01018						



Bent lance with adjustable jet

TECHNICAL FEATURES				COMPATIBLE MODELS					
IN	mm	Ø	CODE	36075-00040	36075-00039	36075-00038	36075-00035	36075-00042	36075-00041
M22x1,5 M	700	045	10002-03530						
M22x1,5 M	700	07	10002-03685						



Bent lance, with rotating nozzle

TECHNICAL FEATURES				COMPATIBLE MODELS					
IN	mm	Ø	CODE	36075-00040	36075-00039	36075-00038	36075-00035	36075-00042	36075-00041
M22x1,5 M	560	045	10002-03409						
M22x1,5 M	560	070	10002-03518						



Foam lance, with regulator

TECHNICAL FEATURES				COMPATIBLE MODELS					
IN	l/min	lt	CODE	36075-00040	36075-00039	36075-00038	36075-00035	36075-00042	36075-00041
M22x1,5 M	20	1	10002-03520						



Sand/Soda blasting lance kit

TECHNICAL FEATURES				COMPATIBLE MODELS					
IN	mm	Ø	CODE	36075-00040	36075-00039	36075-00038	36075-00035	36075-00042	36075-00041
M22x1,5 M	435 / 500	040	10002-03401						
M22x1,5 M	435 / 500	080	10002-03588						



Rotating brush

TECHNICAL FEATURES				COMPATIBLE MODELS					
IN	bar	l/min	CODE	36075-00040	36075-00039	36075-00038	36075-00035	36075-00042	36075-00041
M22x1,5 M	20	8-11	00080-00924						
M22x1,5 M	20	13-18	00080-00925						



Drain nozzle

TECHNICAL FEATURES				COMPATIBLE MODELS					
IN	m	l/min	CODE	36075-00040	36075-00039	36075-00038	36075-00035	36075-00042	36075-00041
M22x1,5 M	25	10 ÷ 15	00058-00632						
M22x1,5 M	25	16 ÷ 29	00058-00630						



Steam nozzle kit complete with lance

TECHNICAL FEATURES				COMPATIBLE MODELS					
IN	mm	Ø	CODE	36075-00040	36075-00039	36075-00038	36075-00035	36075-00042	36075-00041
M22x1,5 M	700	0,6	10002-03696						



Bent lance with detergent head, without nozzle

TECHNICAL FEATURES				COMPATIBLE MODELS - MODELLI COMPATIBILI					
IN	OUT	mm	CODE	36075-00040	36075-00039	36075-00038	36075-00035	36075-00042	36075-00041
M22x1,5 M	1/4" NPT F	760	10002-03590						



Spiral suction hose kit

TECHNICAL FEATURES				COMPATIBLE MODELS					
IN	OUT	m	CODE	36075-00040	36075-00039	36075-00038	36075-00035	36075-00042	36075-00041
Ø 18	Ø 23	8	10002-02545						



Rubber delivery hose extension kit

TECHNICAL FEATURES				COMPATIBLE MODELS					
IN	OUT	m	CODE	36075-00040	36075-00039	36075-00038	36075-00035	36075-00042	36075-00041
M22x1,5 F - Ø14	M22x1,5 M - Ø14	10 - R1 5/16"	10002-03403						
M22x1,5 F - Ø14	M22x1,5 M - Ø14	10 - R2 5/16"	10002-03596						
M22x1,5 M - Ø14	M22x1,5 F - Ø14	15 - R2 3/8"	10002-03566						
M22x1,5 M - Ø14	M22x1,5 F - Ø14	10 - R2 3/8"	10002-03564						
M22x1,5 M - Ø14	M22x1,5 F - Ø14	30 - R2 3/8"	10002-03778						